

INLAND SALUTE

STANDARD APARTMENTS

Konchadi, 4th Mile, Mangalore.

"The Vision of Your Dream Home"



Highlights:

- 20 Prudently designed flats in 4 Floors with maximum light and ventilation. Five Flats in each floor
2 Bedroom measuring 1000, 1070, 1075 Sq.ft. &
3 Bedroom measuring 1395 & 1425 Sq.ft.
- ONE ELEVATOR of eight passenger capacity.
- GENERATOR for common and apartment lighting with sound proof enclosure.
- INTERCOM facility to all apartments, security and society room.
- Provision for CABLE T.V. CONNECTION.
- Covered CAR PARKING in the Basement Floor (at extra cost).
- SOCIETY ROOM in the Basement Floor.
- CONCRETE INTERLOCK PAVING for car parking and yard.
- MELAMINE POLISHED MAIN ENTRANCE DOOR.
- Premium quality RECTIFIED FLOOR TILES inside the apartments.
- PREMIUM QUALITY SWITCHES and WIRES.

Specifications

GENERAL:

- RCC door frames with good quality painted flush door shutters for rooms and fibro tech shutters for toilets.
- Aluminium windows with Sliding shutters.
- Putty finished acrylic distemper painting for ceiling and inside walls.
- Outside wall surfaces painted with Premium quality emulsion paint of a reputed brand.
- Over head water tank and underground sump tank with required pumps.
- Water supply with bore well in addition to the Corporation water connection.

DRAWING/DINING:

- Telephone / T.V. Point / Intercom connection.

BEDROOMS:

- TV and Telephone points in Master Bedroom
- AC provision in Master Bedroom
- Provision for Internet connection in Children's Bedroom

BATHROOMS:

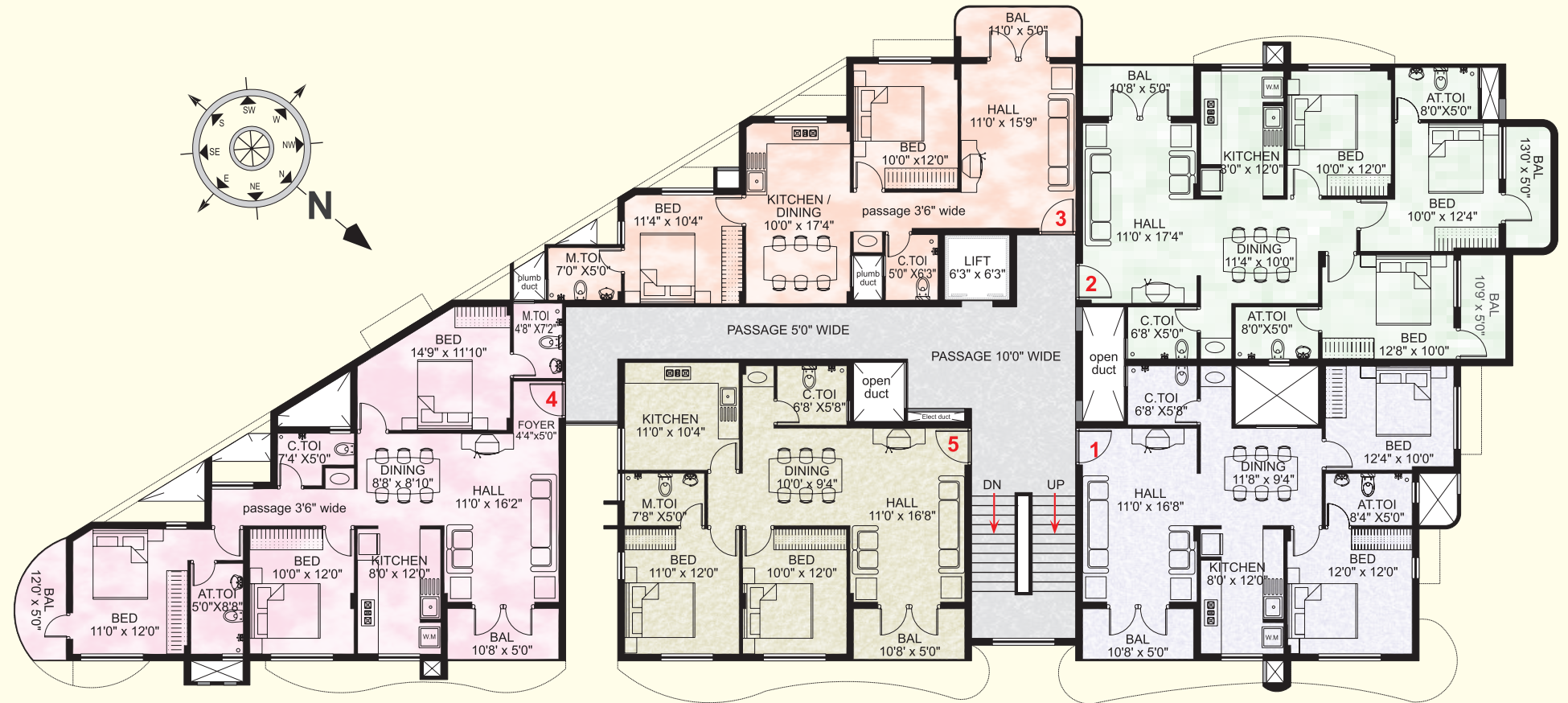
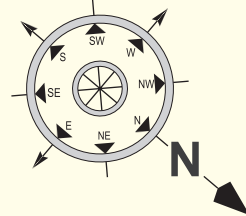
- Hot and cold shower mixer for all toilets.
- European Water Closet (EWC) for all toilets.
- Ceramic Tiles (anti skid) for toilet flooring and glazed tile dado up to full height.
- Premium quality sanitary fittings in all toilets.
- Premium quality CP fittings in all toilets
- Provision for geyser and exhaust fan.

KITCHEN/UTILITY:

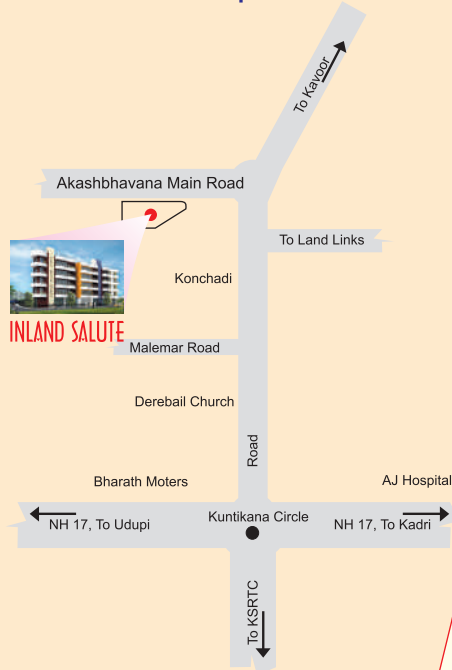
- Stainless steel sinks with drain board and polished black granite counter.
- 2'0" glazed tile dado above platform.
- Provision for fixing water purifier (Aqua guard) and exhaust fan.
- Provision for Washing Machine point with plumbing and water drain line.

Typical Floor Plan

- 01 1070.00 sq. ft. (2 bedroom)
- 02 1425.00 sq. ft. (3 bedroom)
- 03 1000.00 sq. ft. (2 bedroom)
- 04 1395.00 sq. ft. (3 bedroom)
- 05 1075.00 sq. ft. (2 bedroom)



Location Map



S I N C E 1 9 8 6

IN-LAND BUILDERS®

"Inland Ornate", 3rd Floor, Navbhārath Circle, Mangalore-575003.
 Phone : +91 824 - 249 2180 / 249 1795 / 249 6110, Fax : +91 824 - 2496291
 Cell : +91 98450 80786, 98801 38015
 E-mail: info@inlandbuilders.net Web: www.inlandbuilders.net



Project Engineers & Managers:
Gokulraj Associates
 Mahendra Arcade, Mangalore

Structural Consultants:
M/s. Vimal Anil
 Mangalore

Architects:
M/s. Studio Friday Architects
 Mumbai

Regd. Office : 1st Floor, No. 525, 8th Main, 5th Cross, HMT Layout, R.T. Nagar, Bangalore- 560 032,
 Telefax : +91 - 80 23545277