



INLAND Ethos

Residential Apartments
Mahamaya Temple Road, Temple Square, Mangalore

HIGHLIGHTS:

- ◆ 9 Prudently designed flats in 3 Floors with maximum light and ventilation. 2 Bedroom measuring 1010 & 1255 Sq.ft., 3 Bedroom measuring 1665 Sq.ft.
- ◆ Eight passenger capacity lift.
- ◆ GENERATOR backup for common and apartment lighting with sound proof enclosure.
- ◆ INTERCOM facility to all apartments
- ◆ CHILDREN'S PLAY AREA
- ◆ Provision for CABLE T.V. CONNECTION.
- ◆ Covered CAR PARKING in the Ground Floor (at extra cost).
- ◆ CONCRETE INTERLOCK PAVING for car parking and yard.
- ◆ Attractive MELAMINE POLISHED Decorative Main Entrance Door.
- ◆ Premium quality VITRIFIED FLOOR TILES inside the apartments.
- ◆ MODULAR SWITCHES and PREMIUM QUALITY WIRES.

Promoters:-



IN-LAND BUILDERS®

"Inland Ornate", 3rd Floor, Navbharath Circle, Mangalore-575003.

Phone : +91 824 - 249 2180 / 249 1795 / 249 6110, Fax : +91 824 - 2496291

Cell : +91 99720 89099, 98801 38015

E-mail: info@inlandbuilders.net Web: www.inlandbuilders.net

S I N C E 1 9 8 6



H.O. : 1st Floor, No. 525, 8th Main, 5th Cross, HMT Layout, R.T. Nagar, Bangalore- 560 032,
Telefax : +91 80 23545277, Cell : +91 98801 45145

Architects:

Vasant Kumar Associates
Bangalore

Structural Consultants:

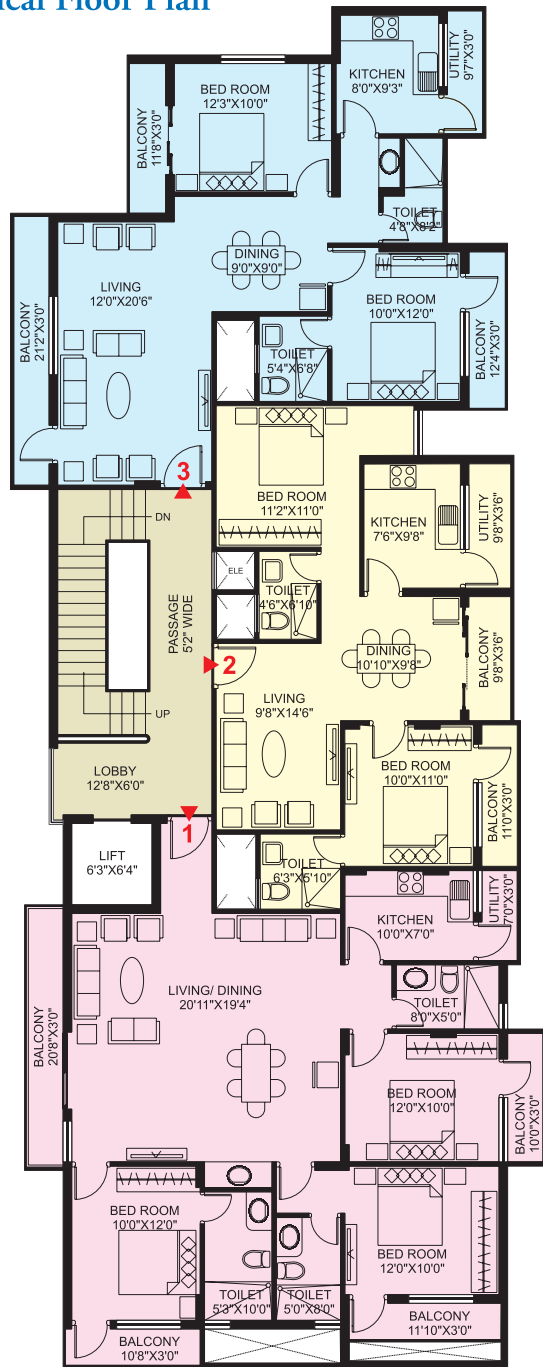
M/s. Vimal Anil
Mangalore

Project Managers:

Gokulraj Associates
Mangalore

Land Owners :- Mr. M.N. Nayak & Mrs. Mohini Ratnakar Shetty

Typical Floor Plan



OTHER DETAILS:

GENERAL :

- ◆ Rectified Ceramic Tiles for entrance and corridors
- ◆ Wooden door frames with good quality painted flush door shutters for rooms
- ◆ R.C.C. door frames with good quality fibrotech shutters for toilets
- ◆ Aluminium windows with sliding shutters.
- ◆ Putty finished acrylic distemper painting for ceiling & inside walls.
- ◆ Outside wall surfaces painted with exterior emulsion paint of a reputed brand.
- ◆ Over head water tank and underground sump tank with required pumps.
- ◆ Water supply with Borewell in addition to the Corporation water connection.

DRAWING/DINING:

- ◆ Telephone / T.V. Point & Intercom connection.
- ◆ Wash basin in the Dining.

BEDROOMS:

- ◆ TV and Telephone points in Master Bedroom
- ◆ AC provision in Master Bedroom
- ◆ Provision for Internet connection in Children's Bedroom

BATHROOMS:

- ◆ Hot and cold shower mixer for all toilets.
- ◆ European Water Closet (EWC) for all the toilets.
- ◆ Coloured Ceramic Tiles (anti skid) for toilet flooring and glazed tile dado up to full height.
- ◆ Premium quality sanitary fittings in all toilets & dining wash basin.
- ◆ Premium quality CP fittings in all toilets
- ◆ Provision for geyser and exhaust fan.

KITCHEN/UTILITY:

- ◆ Stainless steel sink with drain board & polished black granite counter.
- ◆ 2'0" glazed tile dado above platform.
- ◆ Provision for fixing water purifier and exhaust fan.
- ◆ Provision for Washing Machine with plumbing and water drain line

Location Map

